

453_{NEW}

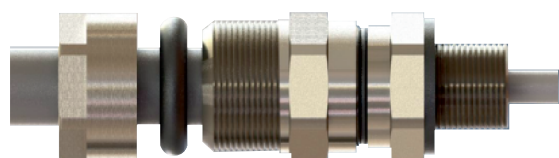


2014/34/EU
IECEX System
Management
System
Valid until:
28.02.2021
www.tuv.com
ID 9105068398



CABLE GLANDS

Zone 1,2,21,22



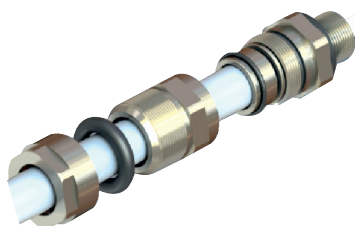
Wide Clamping Range With O-Ring Seal

In each size of Cold Flow Universal glands, O-ring system is used as an IP element instead of Compression Seal.

Clamping range is provide by a o-ring seal.

Deluge System

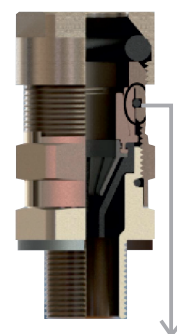
Diaphragm Seal is weak against water intrusion from outside of the enclosure. Thus, deluge protection is necessary for IP protection In Cold Flow Universal Gland design, deluge protection is provided by o-ring on the body & cable clamping O-rings.



Inspectibility of armour clamping

Design of upper body and braid ring allows inspection.

In inspection, disassembly of upper body, cap enables the visibility of armor wire between grounding cone and swivel braid ring. Integrity of assembly is easily controlled.



Anti-rotational design

Anti-rotational design

Design of upper body and braid ring allows inspection.

Design prevents the rotation of swivel braid ring Independent rotational movement of swivel braid ring disables the rotation of cable. Thus, armor wire of cable is protected from rotation's negative effects.



New 453 Universal Cable Gland

Ex Glands / Group II-III / Gas & Dust

Ex II 2GD / Ex db IIC Gb - Ex eb IIC GB - Ex tb IIC Db

EU-type Examination Certificate number:

CESI 18 ATEX 025 X

General Features

- Armor clamp
- Armour earth
- Inspection of cable clamping
- Compact design
- Available in:
M16 to M100
M 3/8" to 4" NPT

Material

Body, Cap, Rings and Cone
→ Brass, Nickel Plated Brass, Stainless Steel

Lower Insert & Extraction Insert
→ PA6

Seal
→ CR (chloroprene Rubber), VMQ (Silicone)

Operating Temperature - Seal Material

CR (chloroprene Rubber)	VMQ (Silicone)
→ 80°C / -40°C	→ 100°C / -60°C

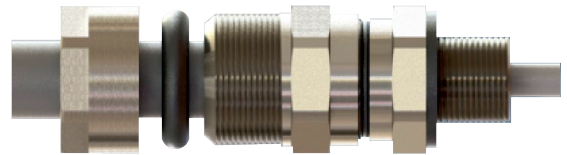
Accessories

Lock Nuts
Gaskets
Shrouds
Earth Tags
Serrated Washers

453_{NEW}



2014/34/EU
IECEx System
Management
System
Valid until:
28.02.2021
www.tuv.com
ID: 9105068398



CABLE GLANDS

Zone 1,2,21,22

ITEM NO.	SEMC Type	Size	SEMC Cable Gland Code	Cable Acceptance Ø min-max (mm)	
				Inner Sheath	Outer Sheath
1	453-NEW	M20x1.5	453-1SM	6.0 - 11.0	9.0 - 16.0
2	453-NEW	M20x1.5	453-1M	8.5 - 14.5	12.0 - 20.0
3	453-NEW	M25x1.5	453-2SM	8.5 - 14.5	12.0 - 20.0
4	453-NEW	M25x1.5	453-2M	12.0 - 20.0	16.0 - 26.0
5	453-NEW	M32x1.5	453-3M	17.0 - 26.0	20.0 - 33.0
6	453-NEW	M40x1.5	453-4M	23.0 - 32.0	29.0 - 41.0
7	453-NEW	M50x1.5	453-5M	29.0 - 41.0	36.0 - 52.0
8	453-NEW	M63x1.5	453-6M	44.0 - 56.0	50.0 - 65.0
9	453-NEW	M75x1.5	453-7SM	44.0 - 56.0	50.0 - 65.0
10	453-NEW	M75x1.5	453-7M	54.5 - 68.0	61.0 - 78.0
11	453-NEW	M90x1.5	453-8M	67.0 - 77.0	75.0 - 89.0
12	453-NEW	M100x1.5	453-9M	75.0 - 91.0	88.0 - 104.0

All information may be revised or changed by SHOMAL at anytime without prior notice or explanation.