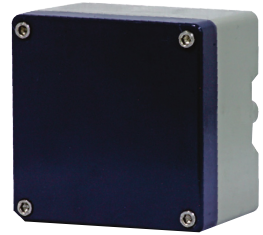


LOCAL TERMINAL BOX 03

LTB 120



**FLAMEPROOF
ZONE 1,2,21,22**



SPECIFICATION

TYPE	LTB 120
HAZARDOUS AREA ZONE	Zone 1 - Zone 2 (Gas) Zone 21 - Zone 22 (Dust)
MARKING	Ex II 2 G D Ex e IIC T6 Gb IIIC Ex tb IIIC T85°C Db
STANDARDS	EN60079-0 EN60079-7 EN60079-31
EU-TYPE EXAMINATION CERTIFICATE NO.	TÜV 13 ATEX 7440 X
INGRESS PROTECTION	IP66
ENCLOSURE MATERIAL	Aluminium Alloy
ENCLOSURE FINISH	RAL7032 (Other colors are available on request)
AMBIENT TEMPERATURE	-30°C to +55°C -20°C to +40°C
LID FIXING	4 x M6 Stainless Steel Screws
ENCLOSURE MOUNTING	4 Holes for M6 Screws
EARTHING	M5 External / M6 Internal Earth Stud
ENCLOSURE EXTERNAL DIMENSIONS	122*120*80
ORDERING DETAILS	Three-layer painting system for use in corrosive environment

TABLE 1- MAXIMUM NUMBER OF ENTRIES PER SIDE OTHER THREAD FORMS/ COMBINATION AVAILABLE ON REQUEST

TYPE	SIDE	M20(O)	M20(A)	M25(B)
LTB 120	L/R	1	1	1
	T/B	2	2	2

DIMENSIONS (MM)

	LENGTH	WIDTH	HEIGHT
EXTERNAL DIM	120	122	80
INTERNAL DIM	112	110	62
MOUNTING LOCATION: 106 X 76			

